

Wafer Check Valves



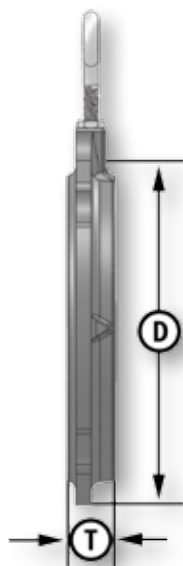
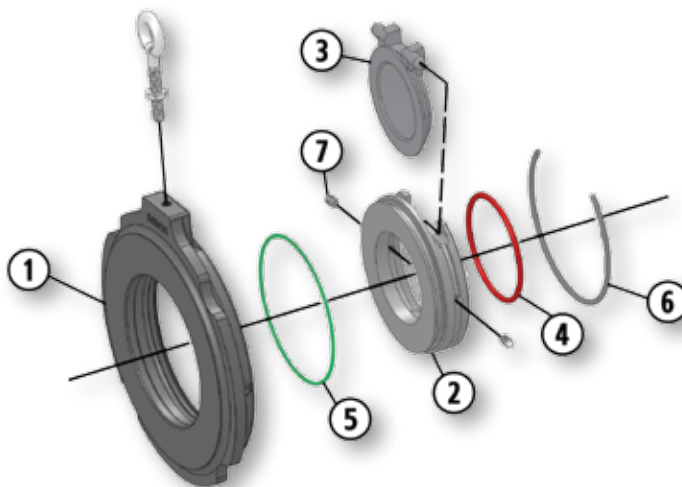
Wafer Check Valves Carbon Steel

- Thin Pattern Swing Check Valve
- ANSI 150 (285 PSI WP)
- 2" Through 6"
- Forged Steel Body Construction

- Replaceable Seat Disc Cartridge
- Seal Located in Seat, Thus Protected From Flow
- NACE Standard
- 316 Stainless Steel Disc Standard
- Generally Larger Port Sizes Than Other Brands

Material Description

| ITEM | PART NAME | CARBON STEEL SEAT | STAINLESS STEEL SEAT |
|------|-----------|---------------------------------|--|
| 1 | Body | ASTMA105 | ASTMA105 |
| 2 | Seat | Replaceable Carbon Steel | Replaceable 316 Or 17-PH Stainless Steel |
| 3 | Disc | Replaceable 316 Stainless Steel | Replaceable 316 Stainless Steel |
| 4 | O-Ring | Seat Seal: Fluorocarbon | Seat Seal: Fluorocarbon |
| 5 | O-Ring | Assembly Seal: Buna-N | Assembly Seal: Fluorocarbon |
| 6 | Retainer | Stainless Steel | Stainless Steel |
| 7 | Set Screw | Stainless Steel | Stainless Steel |



Dimensional Data

| SIZE | CATALOG NUMBER | | PORT | D | T | STUD LENGTH | LBS. |
|------|-------------------|----------------------|------|------|-----|-------------|------|
| | CARBON STEEL SEAT | STAINLESS STEEL SEAT | | | | | |
| 2 | 2T-150 | 2T-150S | 1.25 | 4.12 | .75 | 4.25 | 2.5 |
| 3 | 3T-150 | 3T-150S | 2 | 5.37 | .75 | 4.50 | 4.4 |
| 4 | 4T-150 | 4T-150S | 2.81 | 6.87 | .75 | 4.50 | 7 |
| 6 | 6T-150 | 6T-150S | 4.50 | 8.75 | .87 | 5 | 13.5 |